

# DIGITAL Hi TESTER



## 3205

### VERSATILITY + RELIABILITY

The digital multi tester image has been revolutionized and improved performance, embodying all that is best in the popular 3201 model, built into this new version which the makers are confident will give outstanding performance in research laboratories on production lines and many other fields.

# Wide Liquid Crystal Display

## ●Max. Liquid Crystal Display Readings to 1999

Max. Resolution 0.1mV/DC V

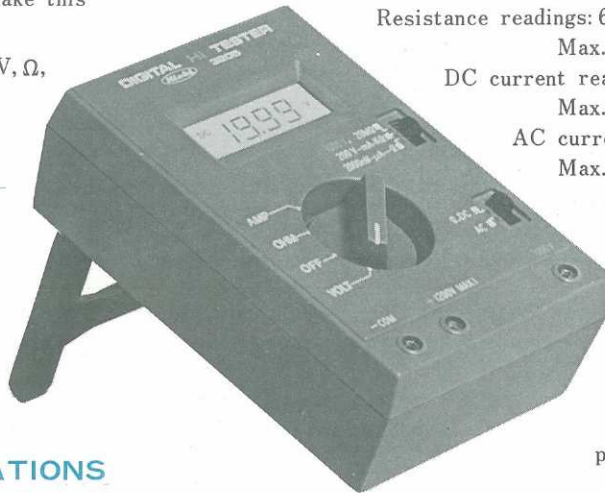
Units, polarity, "over range" reading (indicated by flashing of the maximum decimal point), low battery power (unused decimal point flashing), and other information eliminate the possibility of misreading and make this little instrument a joy to use.

Unit symbols DC, AC,  $\mu$ A, mA, mV, V,  $\Omega$ , K $\Omega$  and M $\Omega$  are indicated.

## ●Semi-Auto Range

Covers 24 ranges

A minimum amount of operating is required to cover a large number of ranges with the automatic two sensitivity auto range combined with the manual range switch.



## ●One Tester for Five Functions

Gives AC current readings, too

DC voltage readings: 5 ranges (Max. 1000V)  
Max. resolution, 0.1mV

AC voltage readings: 5 ranges (Max. 1000V)  
Max. resolution, 0.1mV

Resistance readings: 6 ranges (Max. 20M $\Omega$ )  
Max. resolution, 0.1 $\Omega$

DC current readings: 4 ranges (Max. 200mA)  
Max. resolution, 0.1 $\mu$ A

AC current readings: 4 ranges (Max. 200mA)  
Max. resolution, 0.1 $\mu$ A

## ●Wide Liquid Crystal Display

With the new wider dial and larger figures, reading has been made much easier. The FE (field effect) type liquid crystal provides strong contrast or easier reading, low power consumption and long life.

## ■GENERAL SPECIFICATIONS

Maximum Indication : 1999 (except 1000V DC, AC)  
Response time : DC,  $\Omega$  approx. 1 sec  
AC approx. 3 secs  
Sample Rate : approx. 2 times/sec  
Over indication : The 1 in the maximum position flashes on and off.  
Polarity : Auto polarity  
Power Supply : UM-3 $\times$ 4 (SIZE "AA")  
Power Consumption : approx. 250mW

Battery check : When battery voltage drops below operating voltage the decimal point, which has been off until this time, flashes on and off.

Dimensions : approx. 151H $\times$ 100W $\times$ 56D mm  
Weight : approx. 470g

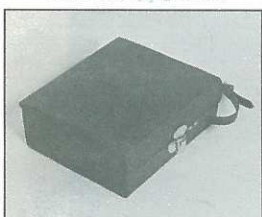
Accessories : Test leads 1 set  
Stand 1 pce  
Alligator clip 1 pce  
Spare fuse 1 pce (0.3A)

## ■PERFORMANCE CHARACTERISTICS

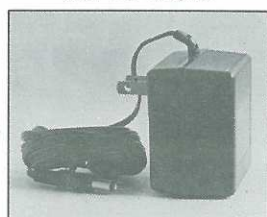
Measuring range		Accuracy	Internal resistance	Remarks
DC V	0 ~200/2000mV	$\pm 0.3\%$ rdg. $\pm 0.1\%$ f.s. $\pm 1$ dgt.	Approx. 10M $\Omega$	Auto range
	0 ~20/200V	$\pm 0.5\%$ rdg. " " "	" "	"
	0 ~1000V (MAX)	$\pm 1.5\%$ rdg. " " "	" "	" By using 1000V terminal
AC V	0 ~200mV/2000mV	$\pm 0.3\%$ rdg. $\pm 1.0\%$ f.s. $\pm 1$ dgt.	Approx. 10M $\Omega$	200mV/2000mV Auto range
	0 ~20/200V	$\pm 0.8\%$ rdg. $\pm 0.7\%$ f.s. " "	" "	Auto range
	0 ~1000V (MAX)	$\pm 1.7\%$ rdg. $\pm 0.3\%$ f.s. " "	" "	" By using 1000V terminal
$\Omega$	0 ~200/2000 $\Omega$	$\pm 0.5\%$ rdg. $\pm 0.1\%$ f.s. $\pm 1$ dgt.	Measuring current 1mA	Auto range
	0 ~20/200K $\Omega$	" " " " "	" 10 $\mu$ A	"
	0 ~2/20M $\Omega$	$\pm 0.7\%$ rdg. $\pm 0.2\%$ f.s. " "	" 0.1 $\mu$ A	"
DC A	0 ~200/2000 $\mu$ A	$\pm 1.0\%$ rdg. $\pm 0.1\%$ f.s. $\pm 1$ dgt.	Approx. 1K $\Omega$	Auto range
	0 ~20/200mA	" " " " "	" 10 $\Omega$	"
AC A	0 ~200 $\mu$ A/2000 $\mu$ A	$\pm 1.3\%$ rdg. $\pm 1.0\%$ f.s. $\pm 1$ dgt.	Approx. 1K $\Omega$	200 $\mu$ A/2000 $\mu$ A Auto range
	0 ~20/200mA	" $\pm 0.2\%$ f.s. " "	" "	Auto range
		" $\pm 0.7\%$ f.s. " "	" 10 $\Omega$	"

## ■OPTIONAL ACCESSORIES

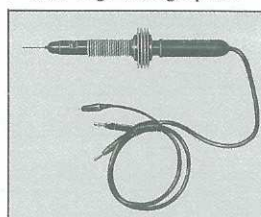
9054 Carrying case



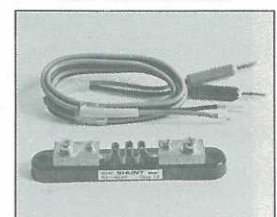
9035 AC Adapter



30KV DC  
9014 High voltage probe



10A DC  
9081 External shunt



**HIOKI ELECTRIC WORKS, LTD.**

MAIN OFFICE, OVERSEAS DEPT. & FACTORY: 6249 SAKAKI-MACHI, HANISHINA-GUN, NAGANO-JAPAN.  
OVERSEAS TELE: 03327-508 TELEPHONE NO.: 02688-2-3030~5,  
BRANCHES: TOKYO, OSAKA, NAGOYA, FUKUOKA,

HIOKI N.Y. CORP. 42-16 235TH STREET DOUGLSTON, NEW YORK 11363. TELEPHONE NO.: 212-224-2404